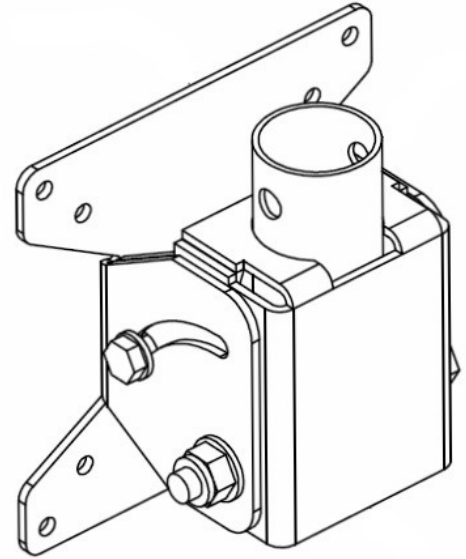


# LMA

## VESA MOUNT



75-100mm LCD Monitor bracket

The LMA is design to attach to APM1500 and APM3000 dropper poles and can accommodate medium to large LCD monitors

### OPTIONS

N/A

### APPLICATIONS

Warehouses, retail and grocery stores, industrial sheds & storage facilities

---

## SPECIFICATIONS

---

#### CONSTRUCTION

2.0mm ZA steel

#### FINISH

White or Black polyester Powder Coat

#### DIMENSIONS—AT LARGEST POINTS

121.9mm x 121.9mm x 65.3mm deep

#### ACCESS

N/A

#### CABLE ENTRY

1 X 30mm hole and tube

#### MAX MONITOR WEIGHT (RECOMMENDED)

15Kg

#### WEIGHT

1.2Kg

#### IP RATING

N/A

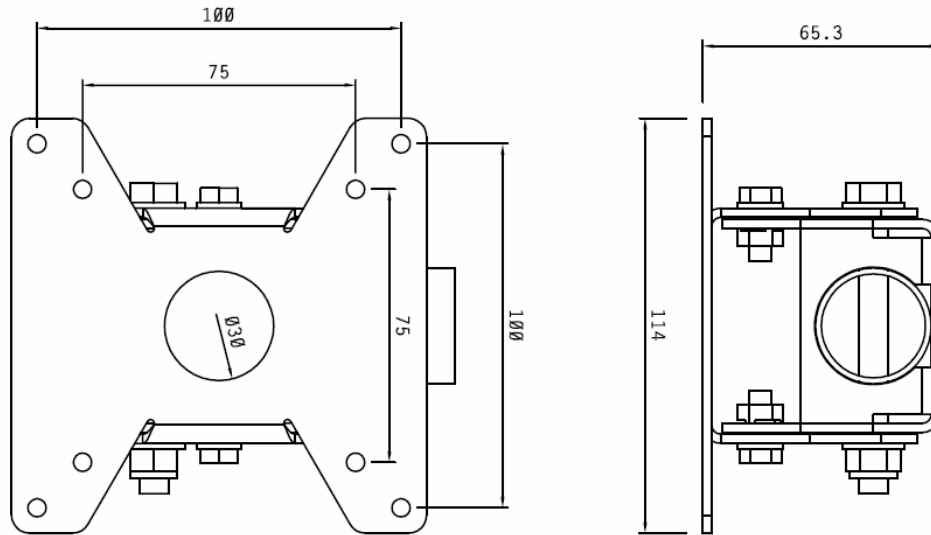
---

## PART NUMBER DESCRIPTION

LMA

Vesa Mount 75-100mm

### Mounting DIMENSIONS



### INSTALLATION SUPPORT

This Bracket is designed to provide the installer with the flexibility of which monitor will be used

It is suggested that the required amount of fixings should withstand up to 20kg of weight. Additionally the choice of fixing should depend on the type of bracket or fixing it is fixed to.

The bracket is designed for Strongabuilt and SEE designed dropper poles. Other configurations may fit, but should be discussed with See Security first.

