

S2000-IW



AISI 316L Stainless Steel 24VAC Camera Housing

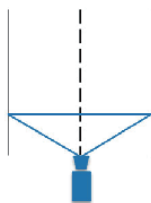
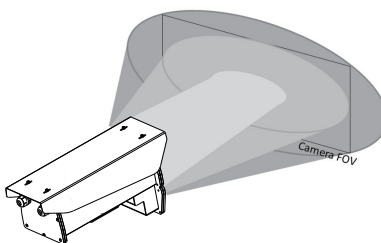
AETEK's S2000-IW camera housing constructed by AISI 316L stainless steel is designed to protect IP & analog box/brick camera in highly corrosive & severe environments such as offshore, chemical, petrochemical, and tunnel areas. Besides built-in heater & blower to prevent from ice & mist on window, S2000-IW has built-in wiper and is compliant to IP66, and IK10 standards. An 24VAC power input is obligatory for this robust housing providing 12VDC & 24VAC output inside housing. S2000-IW is a new generation of camera housing equipped with built-in 12W VAIR illuminator that is adjustable on beam angle by remote control thru RS485 Pelco-D command or manual dip switch to suit camera's FOV. Furthermore, the inner capacious spaces suits camera equipped with wide angle & long distance lens.

Features

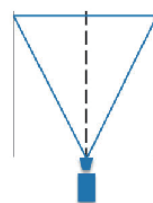
- AISI 316L stainless steel construction
- Fits corrosive & severe environments
- Built-in 12W VAIR Illuminator up to 140m
- Long range of built-in 12W VAIR Illuminator up to 140m at 10°
- Wide range of built-in 12W VAIR Illuminator up to 50m at 40°
- IP66 weather rating standards
- IK10 impact rated on stainless steel outer shell
- Built-in Wiper
- Window heater & blower included
- Supports wide-angle & long-distance remote focus lens
- Adjustable AISI 316L sunshield

VAIR Illuminator Technology

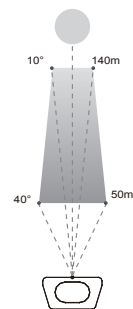
VAIR technology is optical technology to adjust illuminator beam angle by remote control RS485 Pelco-D command or manual dip switch to suit camera FOV.



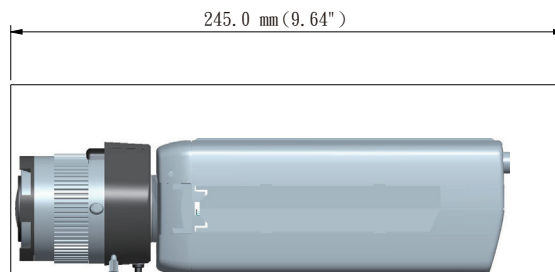
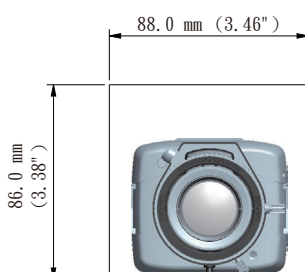
Wide angle for short distance



Tele angle for long distance



Maximum Camera Length



Specifications

Power Specifications

Power Input	24VAC
Power Output	12VDC, 24VAC
Unit Power Consumption	Wiper: 6W Blower: 2W IR LED: 12W Window Heater: 5W
VAIR Illuminator	850nm, 50m@40°, 140m@10°

Environmental Specifications

Operating Temperature	-20°C ~ 65°C (-4°F ~ 149°F) -20°C ~ 50°C (w/IR LEDs)
Heater ON / OFF	≤ 20°C (68°F) ON ≥ 30°C (86°F) OFF
Blower ON / OFF	≤ 35°C (95°F) ON ≥ 25°C (77°F) OFF
Weather Rating	IP66
Vandal Proof	IK10 Impact Rated on AISI 316L Stainless Steel Housing"

Physical Specifications

Window	Glass w/ heater
Body Material	AISI 316L stainless steel
Body Weight	8.2 kg
Cable Grants	PG16 x 2

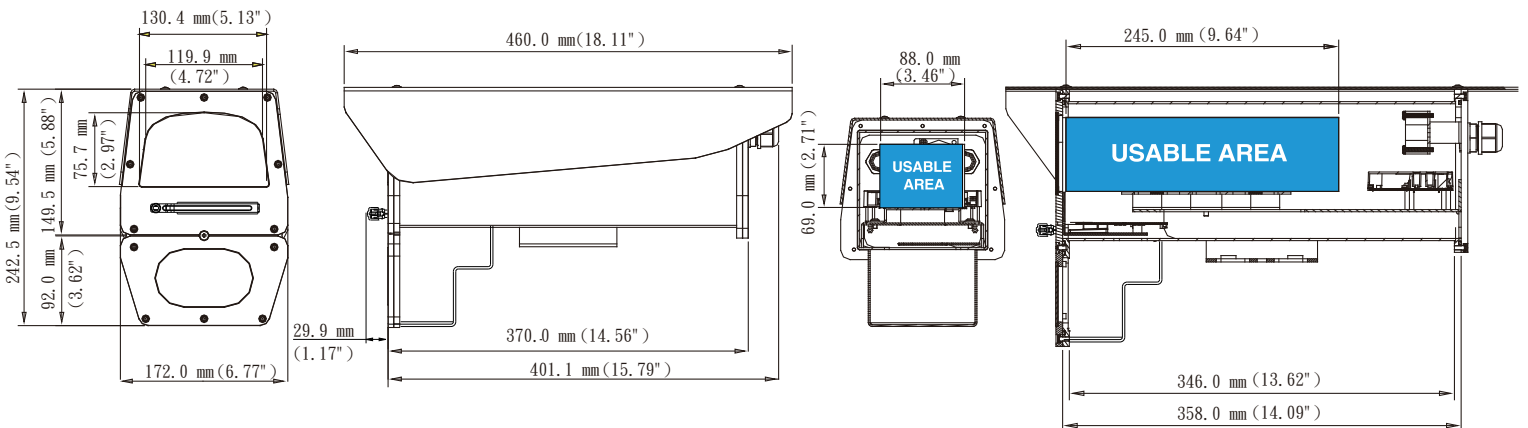
Certifications

EMC	CE, FCC, C-Tick
-----	-----------------

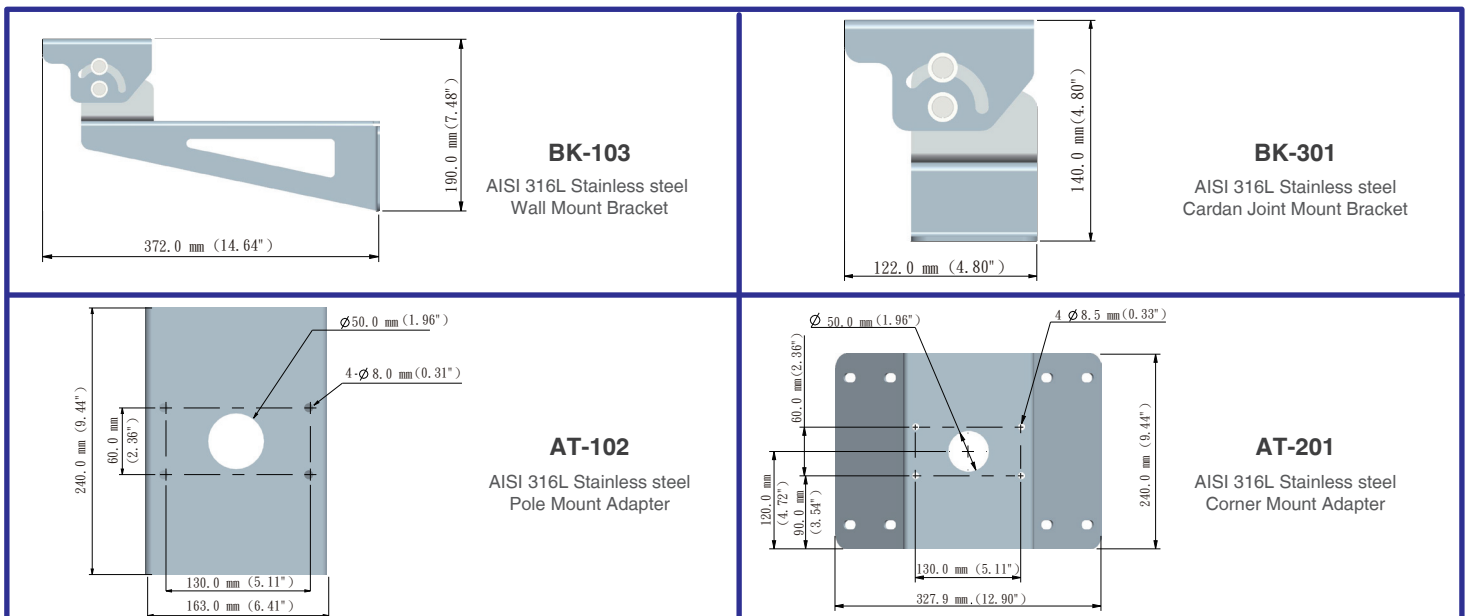
LEDs

PWR	System power status
-----	---------------------

Dimensions



Accessories

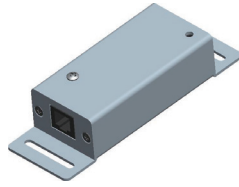


Related Product



PB-024-3AC

AISI 316L Stainless Steel
Outdoor 24VAC Power Box



SD-101

1 Port GbE
PoE Surge Protector