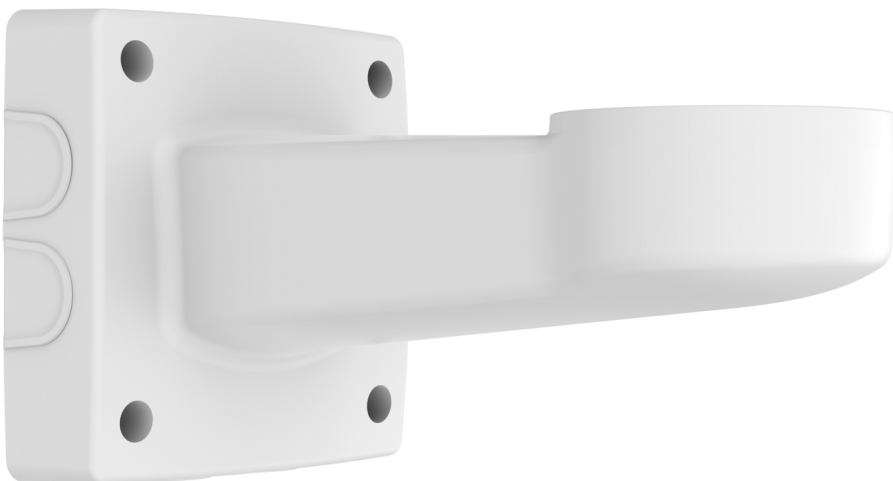


## AXIS T94J01A Wall Mount

Robust design with cable protection

AXIS T94J01A is an aluminum wall mount suitable for Axis positioning cameras and positioning units. It is compatible with Axis ACI 3/4" conduit adapters, and offers six cable entries. Cables can be routed through the back or, by using a conduit connection, from each side or from the bottom.

- > For indoor and outdoor use
- > Impact-resistant (IK10)
- > Robust and safe
- > Suitable for Axis positioning cameras and positioning units



## AXIS T94J01A Wall Mount

General		Weight	4.5 kg (9.9 lb)
<b>Supported products</b>	AXIS Q8685-E/-LE PTZ Network Cameras AXIS Q8641-E/Q8642-E PT Thermal Network Cameras AXIS T99A Positioning Units	<b>Maximum load</b>	20 kg (44 lb)
<b>Casing</b>	Powder coated aluminum Color: White NCS S 1002-B	<b>Cable routing</b>	Back: cable hole Bottom, sides: 3/4" Conduit entrance
<b>Sustainability</b>	PVC free	<b>Included accessories</b>	Installation Guide
<b>Environment</b>	Indoor Outdoor	<b>Optional accessories</b>	AXIS T94N01G Pole Mount AXIS T95A64 Corner Bracket AXIS ACI Conduit Adapter 3/4" NPS AXIS ACI Conduit Adapter 3/4" U-Shape 30 mm (1 in) For more accessories, see <a href="http://www.axis.com">www.axis.com</a>
<b>Storage conditions</b>	-45 °C to 70 °C (-49 °F to 158 °F)	<b>Warranty</b>	Axis 3-year warranty, see <a href="http://www.axis.com/warranty">www.axis.com/warranty</a>
<b>Approvals</b>	<b>Safety</b> IEC/EN/UL 62368-1, IEC/EN/UL 60950-22 <b>Environment</b> NEMA 250 Type 4x, IEC 62262 IK10, RoHS, REACH, WEEE	Environmental responsibility: <a href="http://www.axis.com/environmental-responsibility">www.axis.com/environmental-responsibility</a>	
<b>Dimensions</b>	394 x 222 x 217 mm (15.5 x 8.7 x 8.5 in)		



# CENTRAL SECURITY DISTRIBUTION

An Anixter Company

1300 319 499

[csd.com.au](http://csd.com.au)