

DS-KABD8003-RS3 Protective Shield

HIKVISION



Key Feature

- Adapts to three-module surface mounting with protective shield.

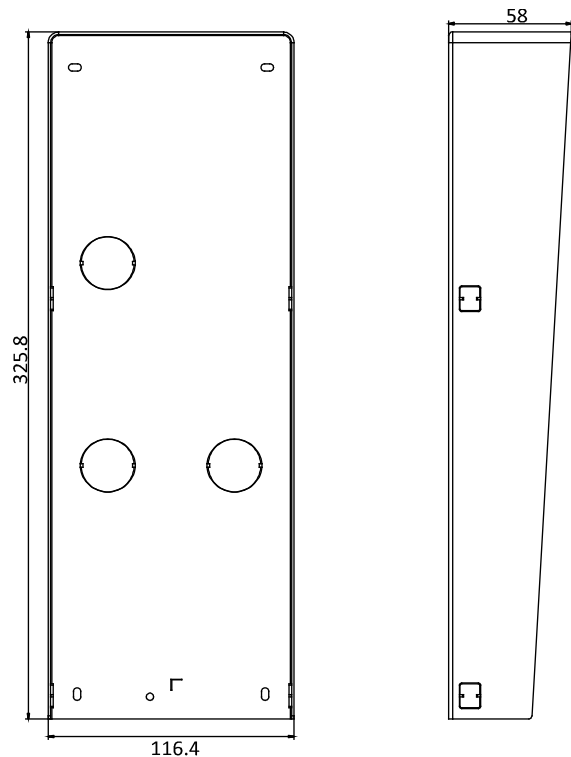
Specification

Parameters	
Material	SECC
Working temperature	-40° C to +60° C (-40° F to 140° F)
Working humidity	10% to 95%
Dimension	325.8 × 116.4 × 58 mm (12.83" × 4.58" × 2.28")
Weight	702.3 g

Available Model

DS-KABD8003-RS3

Dimension



Unit : mm

Installation

1. Paste the installation Sticker 1 onto the wall. Make sure the sticker is placed leveled via measuring with the gradienter.

Drill 4 holes align to the screw holes on the sticker.

The suggested size of hole is 6 (diameter) × 25 (depth) mm.

2. Remove the sticker and insert the expansion sleeves into the screw holes.

Fix the mounting frame and protective shield onto the wall with 4 expansion bolts.

Thread the module-connecting lines across the thread holes of the frame.

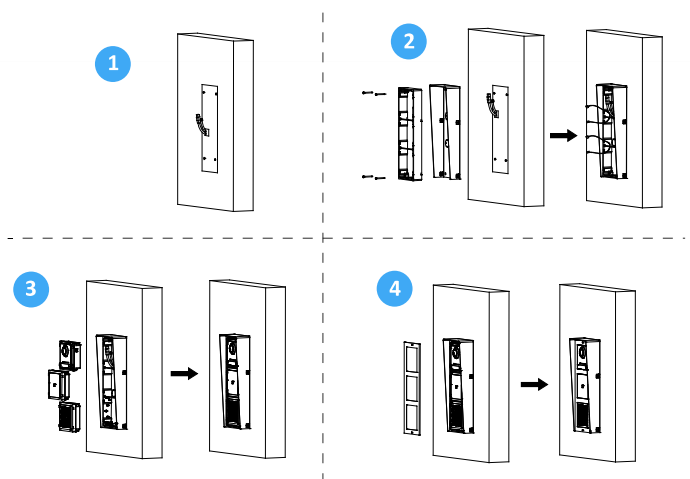
Pass the main unit connecting lines across the thread hole to the top grid.

Connect the cables and module-connecting line 1 to the corresponding interfaces of the main unit, then place the main unit into the upper grid.

Connect the other end of the module-connecting line 1 to the input interface of the sub module. Connect two sub modules via module-connecting line 2.

Organize the line with cable tie in the package.

3. Insert the modules in to the frame after wiring. Main unit must be placed in the top grid.
4. Use the hexagon wrench in the package fix the cover onto the frame.





CENTRAL SECURITY DISTRIBUTION

An Anixter Company

1300 319 499

csd.com.au

VIC: Mulgrave, Tullamarine NSW: Seven Hills, Waterloo ACT: Fyshwick QLD: Loganholme SA: Dudley Park WA: Balcatta